

## WHEEL HUB, STEERING KNUCKLE REMOVAL/INSTALLATION

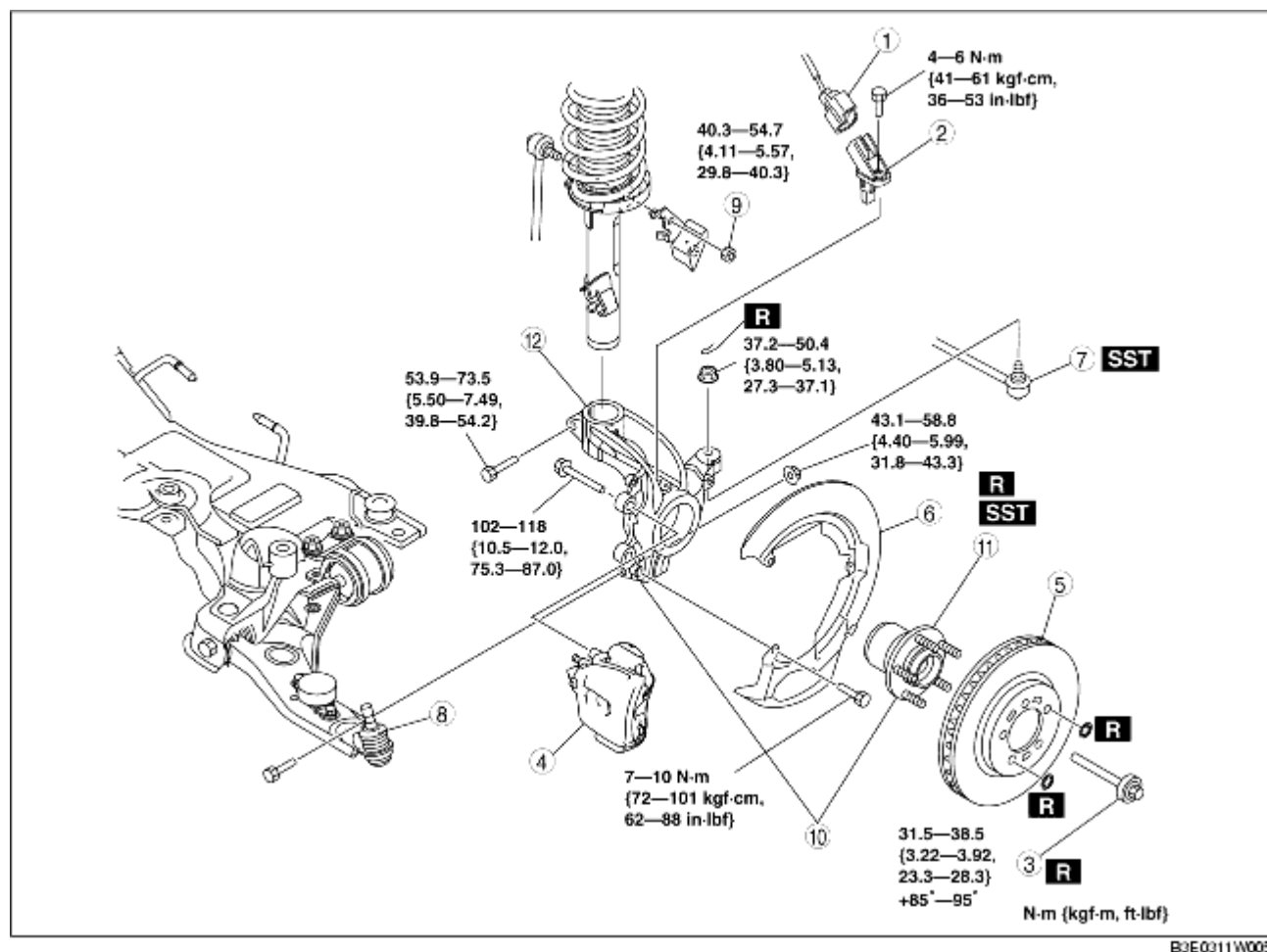
B3E031104060W02

## Caution

- Performing the following procedures without first removing the ABS wheel-speed sensor may possibly cause an open circuit in the wiring harness if it is pulled by mistake. Before performing the following procedures, disconnect the ABS wheel-speed sensor connector (axle side) and fix the wiring harness to an appropriate place where it will not be pulled by mistake while servicing the vehicle.

1. Remove in the order indicated in the table.
2. Install in the reverse order of removal.
3. After installation, inspect the front wheel alignment and adjust it if necessary.

(See [FRONT WHEEL ALIGNMENT](#).)

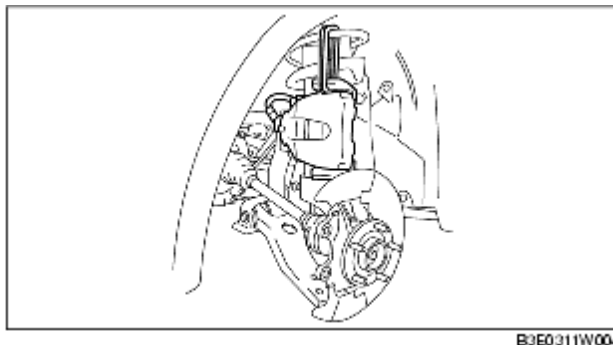


|   |                                  |
|---|----------------------------------|
| 1 | ABS wheel-speed sensor connector |
|   |                                  |

|    |  |
|----|--|
| 2  | ABS wheel-speed sensor   |
| 3  | Lockbolt<br>(See <a href="#">Lockbolt Installation Note.</a> )   |
| 4  | Brake caliper component<br>(See <a href="#">Brake Caliper Removal Note.</a> )  |
| 5  | Disc plate<br>(See <a href="#">FRONT BRAKE (DISC) REMOVAL/INSTALLATION.</a> )  |
| 6  | Dust cover   |
| 7  | Tie-rod end ball joint<br>(See <a href="#">FRONT CROSSMEMBER REMOVAL/INSTALLATION.</a> )   |
| 8  | Front lower arm ball joint   |
| 9  | Stabilizer control link upper nut  |
| 10 | Wheel hub, steering knuckle component<br>(See <a href="#">Wheel Hub, Steering Knuckle Component Removal Note.</a> )                              |
| 11 | Wheel hub component<br>(See <a href="#">Wheel Hub Component Removal Note.</a> )<br>(See <a href="#">Wheel Hub Component Installation Note.</a> ) |
| 12 | Steering knuckle   |

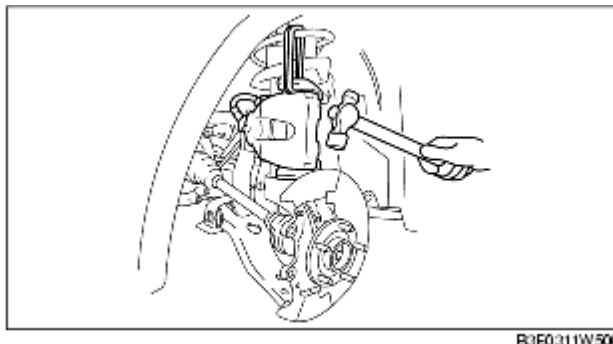
## Brake Caliper Removal Note

1. Remove the brake caliper component from the steering knuckle and suspend it out of the way using a cable.



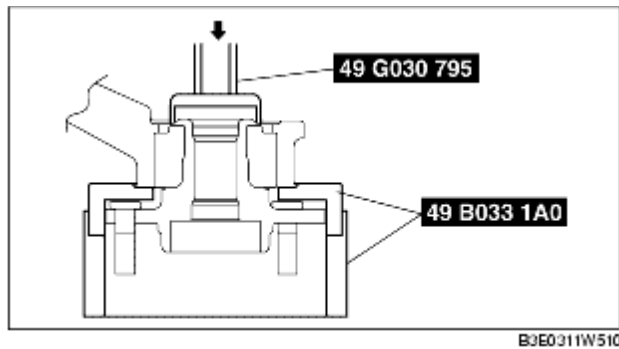
## Wheel Hub, Steering Knuckle Component Removal Note

1. Separate the shock absorber from the wheel hub, steering knuckle component by tapping the upper part of the steering knuckle with a hammer.



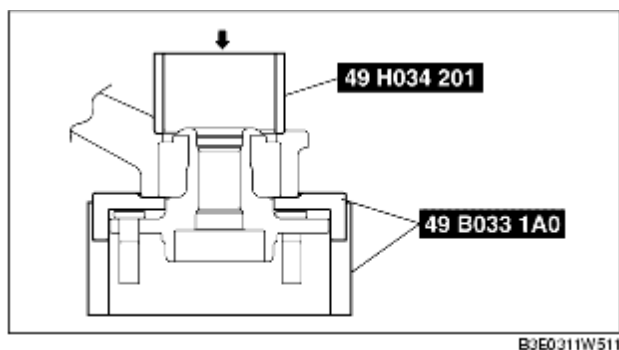
## Wheel Hub Component Removal Note

1. Remove the wheel hub component using the **SSTs**.



## Wheel Hub Component Installation Note

1. Install the wheel hub component using the **SSTs**.



### Caution

- To prevent damage to the wheel hub component, install the SST to the bearing outer race firmly.

## Lockbolt Installation Note

1. Install a new lockbolt and tighten it.

### Tightening torque

31.5-38.5 N·m {3.22-3.92 kgf·m, 23.3-28.3 ft·lbf}

2. Mark the lockbolt at one point and tighten it further until the marking has moved **85°-95°**.

